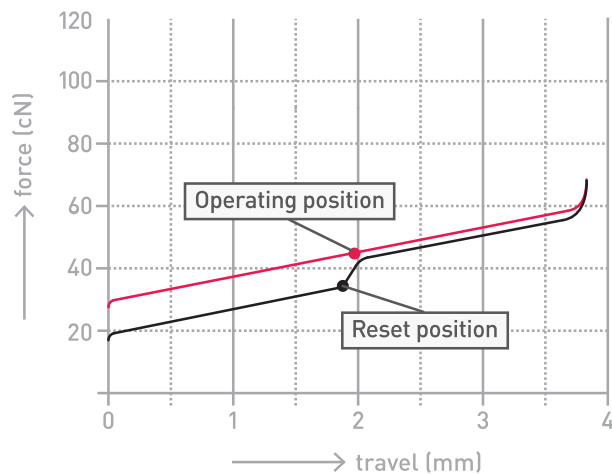
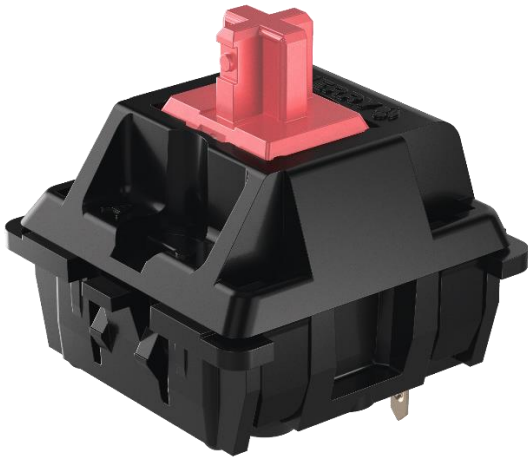


CHERRY MX2A Silent Red

MX2A-71NN/W



The new generation of gold standard keyboard switches

Original CHERRY MX is the world's leading precision technology for mechanical key switches. The CHERRY Gold Crosspoint contact concept and the unprecedented production quality "Made in Germany" are unique. The MX2A series introduces a new level typing experience, setting a new standard for mechanical key switches.

Key benefits:

- Engineered and Made in Germany
- CHERRY MX2A Silent Red switch: Linear actuation without pressure point and reduced typing sound
- Industry-leading CHERRY Gold Crosspoint technology
- Factory-applied, premium-grade lubricant
- Noise-reducing barrel spring design
- Diamond polished stem and spring guidance
- Glide-optimized stem guidance ribs
- Short bounce time for high switching frequency (such as for fast typing)
- Self-cleaning contacts
- Switch resistant to dust and dirt
- Over 50 million keystrokes with no loss of quality guaranteed

Technical Data:

- | | |
|------------------------------|---|
| • Switch Type: | MX Mechanical Switch |
| • Mechanical Fastening: | see table "Models" |
| • Connection type: | Soldered or hot-swappable |
| • Protection class: | IP40 |
| • Operation characteristics: | Linear, silent |
| • Switching voltage: | 5V |
| • Durability: | > 50 million actuations |
| • Contact configuration: | Single-pole contact |
| • Actuator travel: | 3.7mm |
| • Pretravel: | 1.9mm |
| • Initial force: | 30cN |
| • Actuation force: | 45cN |
| • Bounce time: | typ. <1ms |
| • Lighting: | Prepared for use with 2-Pin LED (THT, through hole) |
| • Spring: | Stainless steel |
| • Contacts: | High-quality gold alloy |

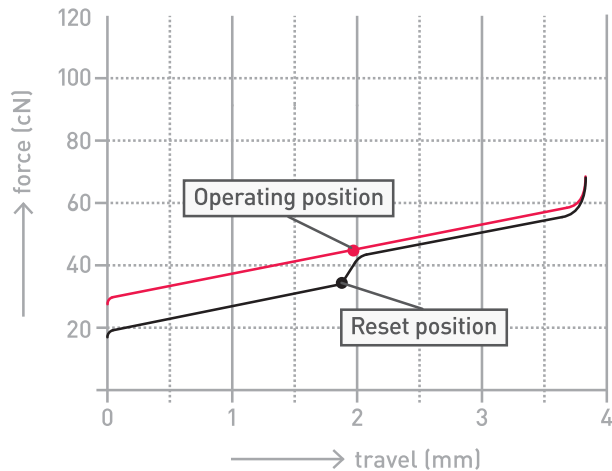
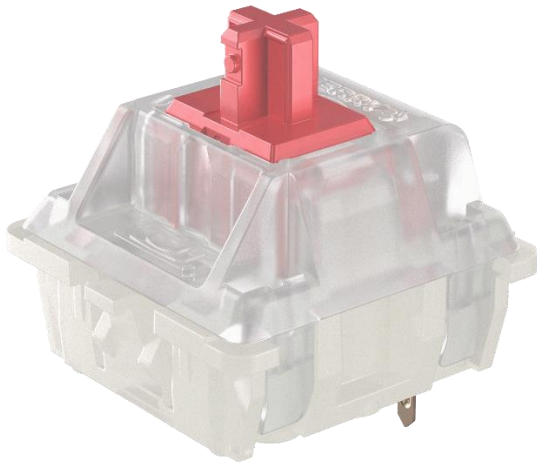
Errors, technical changes and delivery possibilities excepted. Technical information refers only to the specifications of the products. Features may differ from the information provided.

Models:

	Order Number	Description	Fastening
1	MX2A-71NN	Cherry MX2A Silent Red	Snap fastening in frame (3 Pin)
2	MX2A-71NW	Cherry MX2A Silent Red	Fixation pins in the PCB (5 Pin)

CHERRY MX2A RGB Silent Red

MX2A-71NA/B



The new generation of gold standard keyboard switches

Original CHERRY MX is the world's leading precision technology for mechanical key switches. The CHERRY Gold Crosspoint contact concept and the unprecedented production quality "Made in Germany" are unique. The MX2A series introduces a new level typing experience, setting a new standard for mechanical key switches.

Key benefits:

- Engineered and Made in Germany
- CHERRY MX2A Silent Red switch: Linear actuation without pressure point and reduced typing sound
- Industry-leading CHERRY Gold Crosspoint technology
- Factory-applied, premium-grade lubricant
- Noise-reducing barrel spring design
- Diamond polished stem and spring guidance
- Glide-optimized stem guidance ribs
- Short bounce time for high switching frequency (such as for fast typing)
- Self-cleaning contacts
- Switch resistant to dust and dirt
- Over 50 million keystrokes with no loss of quality guaranteed

Technical Data:

• Switch Type:	MX Mechanical Switch
• Mechanical Fastening:	see table "Models"
• Connection type:	Soldered or hot-swappable
• Protection class:	IP40
• Operation characteristics:	Linear, silent
• Switching voltage:	5V
• Durability:	> 50 million actuations
• Contact configuration:	Single-pole contact
• Actuator travel:	3.7mm
• Pretravel:	1.9mm
• Initial force:	30cN
• Actuation force:	45cN
• Bounce time:	typ. <1ms
• Lighting:	SMD LED can be mounted directly on the PCB (not included in the module), opening for SMD LED in the base
• Spring:	Stainless steel
• Contacts:	High-quality gold alloy

Errors, technical changes and delivery possibilities excepted. Technical information refers only to the specifications of the products. Features may differ from the information provided.

Models:

	Order Number	Description	Fastening
1	MX2A-71NA	Cherry MX2A RGB Silent Red	Snap fastening in frame (3 Pin)
2	MX2A-71NB	Cherry MX2A RGB Silent Red	Fixation pins in the PCB (5 Pin)